



excellence in asset management

# Bluetooth GPS Configuration

*Release Version  
Monday, 19 January 2009*



Copyright © 2009

CJN Technologies Ltd.  
All rights reserved

The software described in this document contains proprietary information of CJN Technologies Ltd. It is provided for your use under a licence agreement containing restrictions on its use and disclosure. It is also protected by copyright law. Reverse engineering of the software is prohibited. Under the terms of the licence, the information in this document is also confidential between CJN Technologies Ltd and the client and remains the exclusive property of CJN Technologies Ltd.

This information may change without notice because of the scale and complexity of the continued product development. CJN Technologies Ltd does not warrant that this document is free of errors. If you find any problems in the documentation, please report them to CJN Technologies Ltd. See Contact CJN Technologies Ltd.

No part of this publication may be reproduced, stored in a retrieval system, or transmitted in any form or by any means, electronic, mechanical, photocopying, recording or otherwise without the prior written permission of CJN Technologies Ltd.

## **CJN Technologies Ltd**

PO Box 302 278  
12 Piermark Drive  
North Harbour  
Auckland  
New Zealand

+64 9 415 4790  
0800 CJNTECH (256 8324)

[support@cjntech.co.nz](mailto:support@cjntech.co.nz)  
<http://www.cjntech.co.nz>

## Document Release

To check that you are reading the most recent release of this document, please go to the **CJN Technologies Ltd** web site (<http://www.cjntech.co.nz>).

Author	Version	Release Date
Grant Mackenzie	Release Version 1.0.0	Monday, 19 January 2009

# Contents

<b>Chapter 1 Introduction to Bluetooth GPS Configuration .....</b>	<b>7</b>
Bluetooth and the PC, Laptop or Tablet .....	8
Do You Have Bluetooth Capability? .....	9
Bluetooth Dongle .....	10
XP Vista and Bluetooth .....	10
<b>Chapter 2 PC, Laptop and Tablet Configuration .....</b>	<b>11</b>
GPS Device .....	12
Configuring a GPS Device - Proprietary Software .....	13
Configuring a GPS Device - Microsoft XP or Vista .....	18
Configuring Pocket Manager for a GPS Device .....	23
<b>Index .....</b>	<b>27</b>



## Introduction to Bluetooth GPS Configuration

GPS devices send positioning information to **Pocket RAMM** using a technology known as Bluetooth. In order for GPS positioning information to be available in **Pocket RAMM**, both **Pocket RAMM** and the device on which it operates need to be configured for the Bluetooth communications.

If you use a PDA to run **Pocket RAMM** then the pairing of the PDA with the GPS device works well. This is because **CJN Technologies Ltd** have written the software to manage the pairing process.

If you want run **Pocket RAMM** on a PC, Laptop or Tablet device, then you have to perform the initial set up and pairing of the bluetooth GPS device yourself.

That is what you will learn from this Help file.



First you configure Bluetooth in your PC, Laptop or Tablet.

You do this either using the proprietary software or Windows XP or Vista.

Then you configure **Pocket Manager** to communicate with the PC Laptop or Tablet.

### In This Chapter

Bluetooth and the PC, Laptop or Tablet .....	8
Do You Have Bluetooth Capability? .....	9
Bluetooth Dongle.....	10
XP Vista and Bluetooth .....	10

## Bluetooth and the PC, Laptop or Tablet

Bluetooth is a wireless protocol for exchanging data over short distances from fixed and mobile devices, creating personal area networks (PANs).

You use Bluetooth for wireless exchange of data from a GPS device to [Pocket RAMM](#).

If you are running [Pocket RAMM](#) on a PC, Laptop or a Tablet you should be aware that not all such devices are Bluetooth-enabled.

If you know your device has Bluetooth, then go to [PC, Laptop and Tablet Configuration](#) (on page 11).

If you are unsure whether your device has Bluetooth then go to [Do You Have Bluetooth Capability?](#) (on page 9)

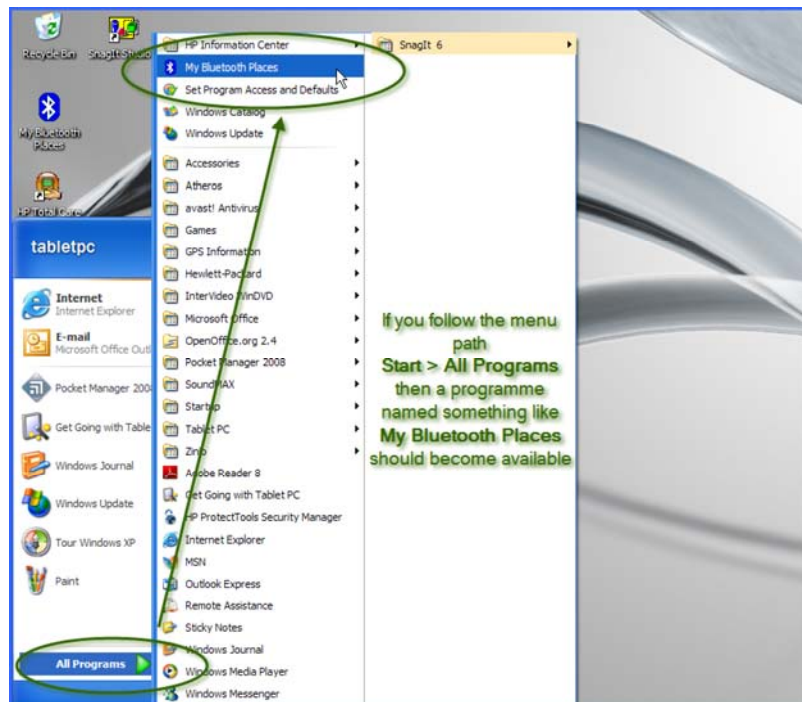


## Do You Have Bluetooth Capability?

If your PC, Laptop or Tablet device has Bluetooth capability, then you are likely to have a Bluetooth shortcut on the desktop. The following example uses the Bluetooth logo.



If there is no shortcut icon on the desktop you should at least have a Bluetooth menu option as in the following example.



If you do not have Bluetooth, you can use a dongle to enable this. See Bluetooth Dongle (on page 10).

## Bluetooth Dongle

If your PC, Laptop or Tablet device does not have Bluetooth, you can enable it with a Bluetooth dongle. An example is pictured below.



To enable Bluetooth using the dongle you follow the instructions which came with it. Normally this involves installing software from a CDROM and inserting the dongle into one of the USB ports on your device.



It is critical for some Bluetooth dongles that you do not insert the dongle itself into the USB port before the software instructs you to do so.

If you have lost the CDROM and the instructions, it may be possible that if you insert the Bluetooth dongle into one of the USB ports, Microsoft Windows XP or Vista will configure it automatically for you. See [Configuring a GPS Device - Microsoft XP or Vista](#) (on page 18).

---

## XP Vista and Bluetooth

Your PC, Laptop or Tablet device may be Bluetooth-enabled but use the Windows operating system to manage Bluetooth communications.

In this situation, the configuring of your device to communicate with [Pocket RMM](#) will differ from configuring proprietary software. See [Configuring a GPS Device - Microsoft XP or Vista](#) (on page 18).

## PC, Laptop and Tablet Configuration

The configuration of Bluetooth to enable PC, Laptop or Tablet device to receive data from a GPS unit is much the same whichever of the three types of devices on which you have **Pocket RAMM** installed.

The configuration differences depend on whether you are using proprietary software which came with the Bluetooth device or whether you are allowing Microsoft XP or Vista to configure the device.

A Tablet has been used in the example which follows for using proprietary software which came with the Bluetooth device.

A PC has been used in the example below which follows for using Microsoft XP or Vista to configure the device.

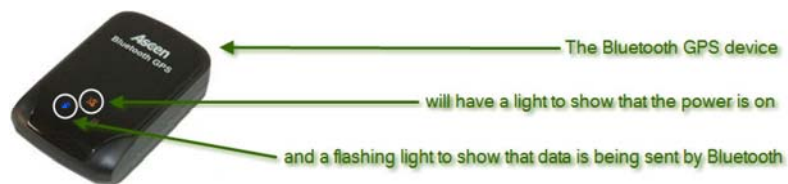
### In This Chapter

GPS Device .....	12
Configuring a GPS Device - Proprietary Software .....	13
Configuring a GPS Device - Microsoft XP or Vista.....	18
Configuring Pocket Manager for a GPS Device .....	23

---

## GPS Device

In order to configure Bluetooth you need to have the GPS device nearby and switched on.



When the device is powered on, a light will display. In the example above this is the orange light.

When the device is transmitting data, a second light will flash. In the example above this is the blue light.



If you recently turned on your GPS device but now both lights have gone out, this could be because your PC, Laptop or Tablet is not sending a signal to the device that it is receiving the data.

When a GPS device is turned on it starts sending data. If it does not then receive confirmation that some device is receiving the data, it will switch itself off to conserve battery power.

## Configuring a GPS Device – Proprietary Software

### Introduction

If you want run **Pocket RAMM** on a PC, Laptop or Tablet device, then you have to perform the initial set up and pairing of the Bluetooth GPS device. This procedure gives an example of how to do this using the proprietary Bluetooth software which came with the device.

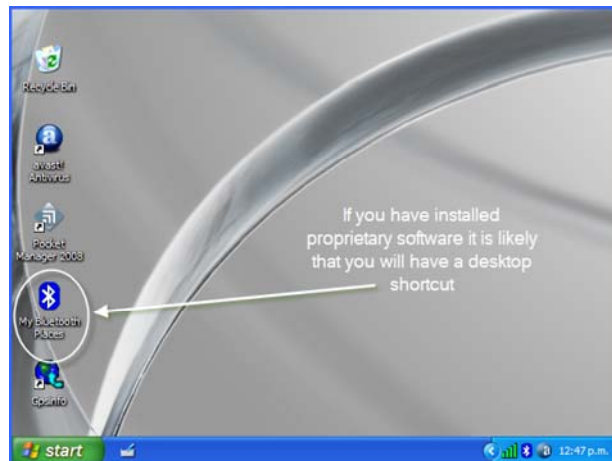
Before you do this you need to have:

- installed the proprietary Bluetooth management software and hardware. You do this by following the instructions which came with the software and hardware. It is likely that this will have already been done for you.
- the GPS device handy to the PC, Laptop or Tablet on which you are performing this procedure.

### Menu Path

Follow the menu path (turn on the PC, Laptop or Tablet device) to open the device at the desktop.

#### ► Configuring a GPS Device for a PC Laptop or Tablet



To do this you follow these steps:

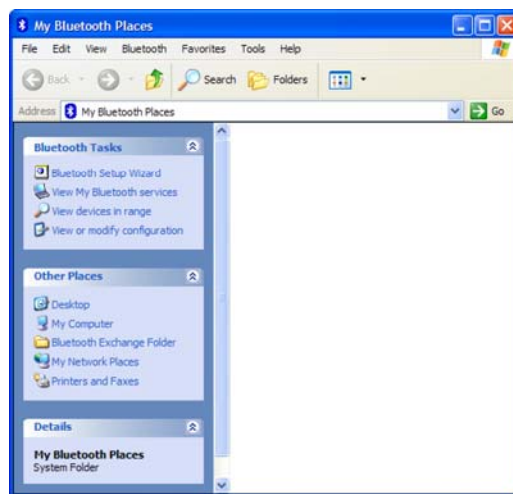
- 1 It is likely that if you have installed proprietary Bluetooth enabling software and hardware that you will have a Bluetooth desktop icon. Do you have one?

<b>Yes</b>	then go to step 4.
------------	--------------------

**No** then go to step 2.

- 2 Follow the menu path Start > All Programs > (the name of your Bluetooth software).

An empty window will open named for your Bluetooth software. In the example below this is named My Bluetooth Places.



- 3 Go to step 5.
- 4 Double click on your Bluetooth icon.  
An empty window will open named for your Bluetooth software.

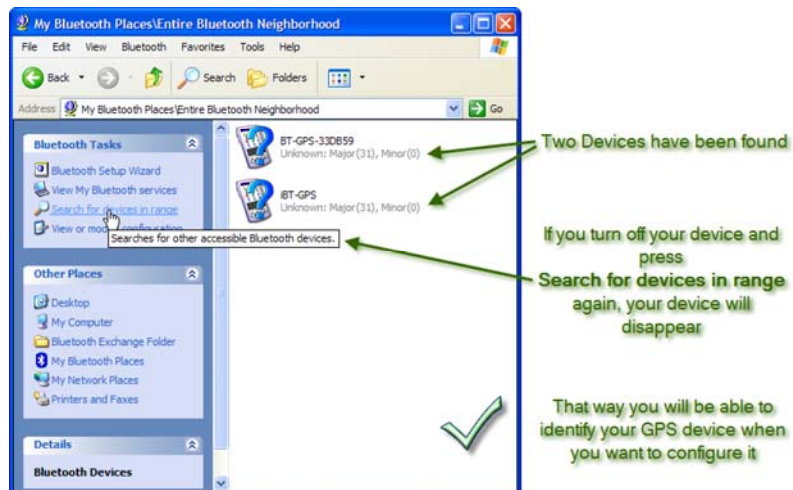


If the window is not empty, you should ignore the icons or files you can see. These represent Bluetooth devices which have already been configured.

- 5 Turn on your GPS device and ensure it is sited next to to your PC, Laptop or Tablet.
- 6 Press **View Devices in Range**.  
Windows will now try to detect the GPS Device which you have switched on and any other Bluetooth devices in the area. These could be other GPS devices, cell phones and PDAs.

If	then
no new devices are found	the Bluetooth detection software and hardware or your GPS device has failed. See your Systems Administrator.

If	then
one new device is found	go to step 7.
more than one new GPS device is found	<p>Then someone near you is operating a GPS device. Switch off your device and press <b>View Devices in Range</b> again. The device which is no longer there is your one.</p> <p>Turn on your GPS device and press <b>View Devices in Range</b> again. Your device will reappear.</p> <p>Go to step 7.</p>



7 Right-click on your Bluetooth device icon and select Discover Available Services.




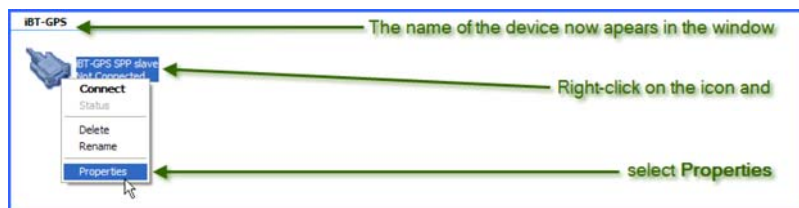
An icon which looks like a printer cable connector will appear. In the example below it is named SPP slave on iBT-GPS.

- 8 Right-click on the icon and select **Create Shortcut**.  
A dialog box will open telling you that the shortcut has been created at the top level.

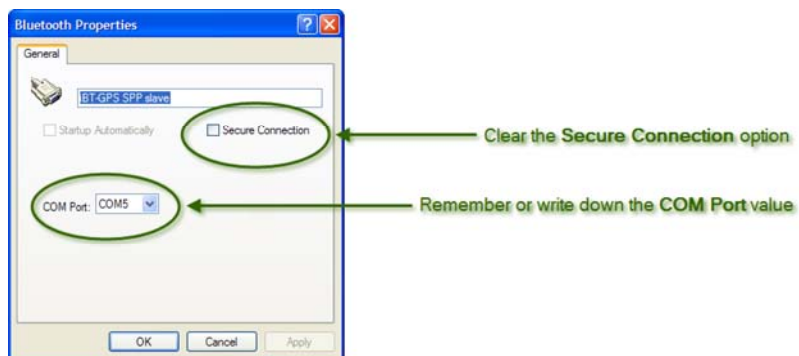


- 9 Press **OK**.  
The dialog will close.

- 10 Press  twice.  
You will be at the top folder level of your Bluetooth management software. An icon for your GPS device will display.



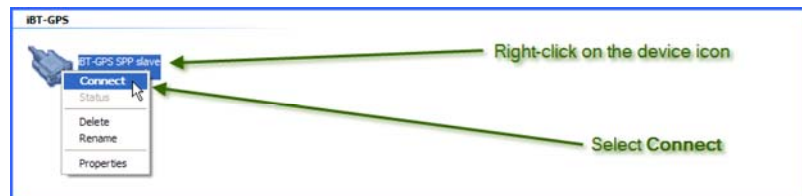
- 11 Right-click on the icon and select **Properties**.  
The **Bluetooth Properties** dialog will open.



- 12 Clear the **Secure Connection** option.
- 13 Remember or write down the value in the **COM Port** drop-down list. In the example above this is **COM5** which means communication port 5.
- 14 Press **OK**.  
The **Bluetooth Properties** dialog will close.



15 Right-click on the icon and select Connect.




Windows will search for and connect to the GPS device. The icon will change to make it obvious that the Bluetooth software is connected to the GPS device.



16 Close your Bluetooth management software window in the normal fashion.

17 You now need to configure **Pocket Manager** to interact with your Bluetooth management software. Go to Configuring Pocket Manager for a GPS Device (on page 23).

 If you lose your GPS device, you will need to delete the shortcut you have just created and create another one for your replacement device.

**NOTE**

## Configuring a GPS Device – Microsoft XP or Vista

### Introduction

If you want run **Pocket RAMM** on a PC, Laptop or Tablet device using the Windows operating system XP or Vista to configure Bluetooth, then you have to perform the initial set up and pairing of the Bluetooth GPS device. In this procedure the Microsoft XP operating system is shown.

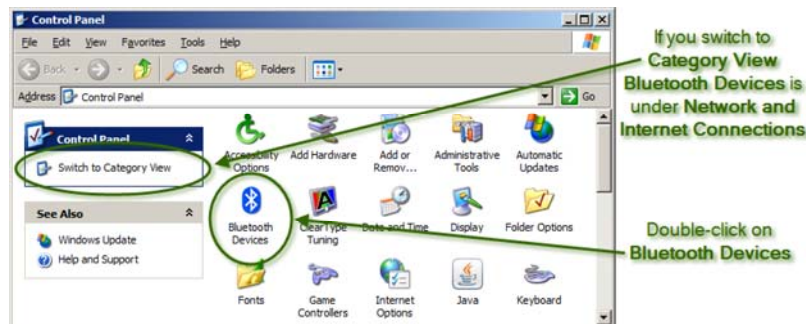
Before you do this you need to have:

- the Bluetooth dongle inserted in a USB port if you are using a dongle
- the security passkey for your GPS device. You will find this in the documentation which accompanied the device. In this procedure the passkey 0000 is used.
- the GPS device handy to the PC, Laptop or Tablet on which you are performing this procedure.

### Menu Path

Follow the menu path (Start > Control Panel) to open the **Control Panel** window.

#### ► Configuring a GPS Device - Microsoft XP



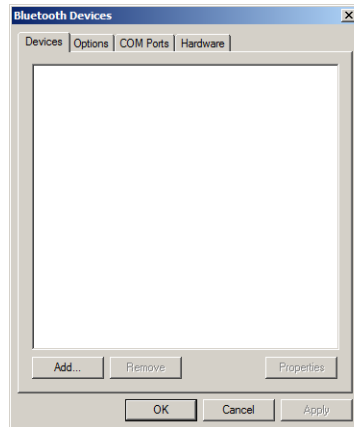
To do this you follow these steps:

- 1 Double-click on Bluetooth Devices.



If you use the Category View at the **Control Panel** rather than the Classic View as shown above, you double-click on Network and Internet Connections to locate the Bluetooth Devices icon.

The **Bluetooth Devices** dialog will open. If you have not configured a Bluetooth device, the dialog will be empty.



The Bluetooth Devices dialog is empty because no Bluetooth Devices have been configured

- 2 Press Add.  
The **Add Bluetooth Device Wizard** will open.



You need to switch on your GPS device

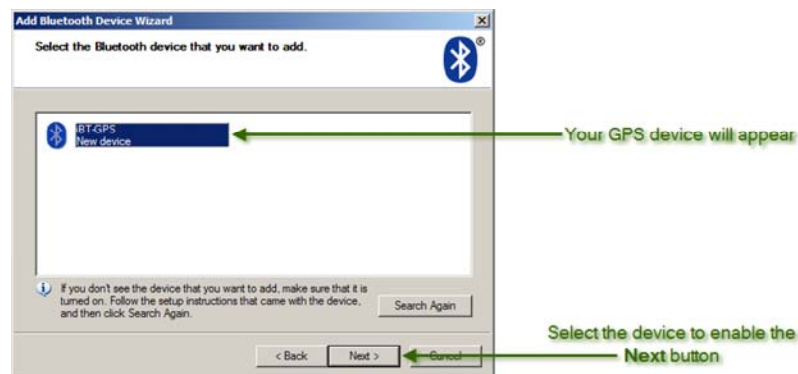
Select this option when your GPS device is switched on

- 3 Switch on your GPS device.
- 4 Select the My device is set up and ready to be found option.  
The Next button will become available.
- 5 Press Next.  
The **Select the Bluetooth Device that you want to add** screen will open.  
Windows will search for and locate your GPS Device and any others operating within the area. These could be other GPS devices, cell phones and PDAs.


If	then
no new devices are found	the Bluetooth detection software and hardware or your GPS device has failed. See your Systems Administrator.
one new device is found	go to step 6.

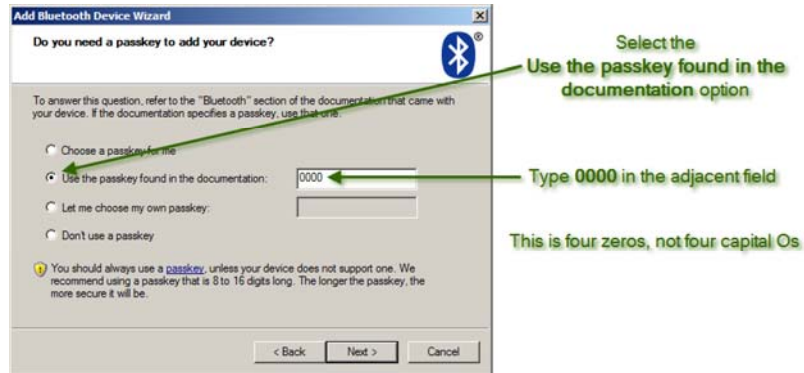
If	then
more than one new GPS device is found	<p>Then someone near you is operating a GPS device. Switch off your device and press <b>Search Again</b>. The device which is no longer there is your one.</p> <p>Turn on your GPS device and press <b>Search Again</b>. Your device will reappear.</p> <p>Go to step 6.</p>

- 6 Select your GPS device. In the graphic below this is iBT-GPS. The Next button will become available.



- 7 Press Next.  
The **Do you need a passkey to add your device** screen will open.
- 8 Select the Use the passkey found in the documentation option.
- 9 Type 0000 in the adjacent field. This is four zeros, not four capital Os.

  
**NOTE** The security passkey for the GPS device used in this procedure is 0000. The security passkey for your device may differ. You will find this security passkey in the documentation which accompanied the device.



10 Press Next.

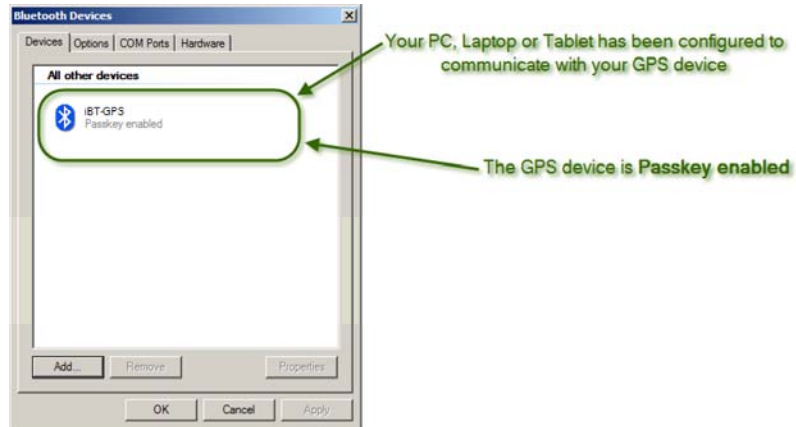
Windows will then communicate with your GPS device and configure it. The screen will close and the **Completing the Add Bluetooth Device Wizard** screen will open.



11 You need to write down or remember the communication port from which **Pocket RAMM** will receive its Bluetooth communications. In the example above, this is Outgoing COM port COM5.

12 Press Finish.

The **Add Bluetooth Device Wizard** screen will close. You will be returned to the **Bluetooth Devices** dialog where your GPS device will display. It will now be labeled Passkey enabled.



- 13 Close the screens and exit the software in the normal fashion.
- 14 You now need to configure **Pocket Manager** to interact with your GPS. Go to [Configuring Pocket Manager for a GPS Device](#) (on page 23).



If you lose your GPS device, you will need to delete the configuration you have just created and create another one for your replacement device.

## Configuring Pocket Manager for a GPS Device

### Introduction

Once you have configured your PC, Laptop or Tablet for your GPS device, you need to configure **Pocket Manager** so that **Pocket RAMM** can receive the GPS data via Bluetooth. You set **Pocket Manager** to use the correct communication port.

Before you do this you need to have:

- either configured the proprietary Bluetooth management software for your GPS device on your PC, Laptop or Tablet. See Configuring a GPS Device - Proprietary Software (on page 13).
- or configured the Microsoft XP or Vista software to manage communication with your GPS device on your PC, Laptop or Tablet. See Configuring a GPS Device - Microsoft XP or Vista (on page 18).
- Installed **Pocket RAMM** and **Pocket Manager** on your PC, Laptop or Tablet.
- the GPS device handy to the PC, Laptop or Tablet
- The communication port number from when you configured the GPS device. See Configuring a GPS Device - Proprietary Software (on page 13) or Configuring a GPS Device - Microsoft XP or Vista (on page 18).

### Menu Path

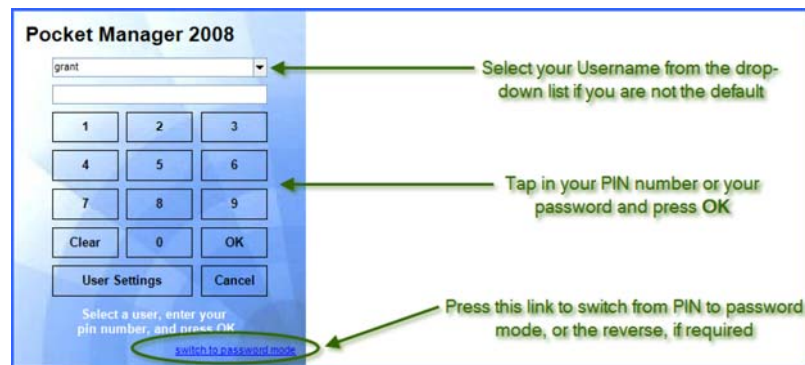
Follow the menu path (turn on the PC, Laptop or Tablet device) to open the device at the desktop.

#### ► Configuring Pocket Manager for a GPS Device

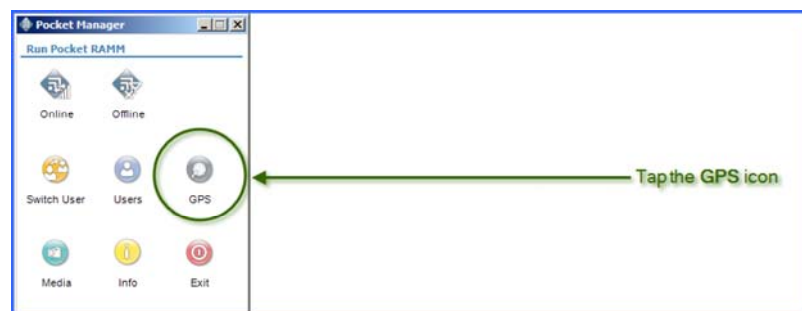


To do this you follow these steps:

- 1 Double click on your **Pocket Manager** icon.  
The **Pocket Manager** security screen will open. You will need a PIN number or a password to progress depending on your set up. In the example below a PIN is required.

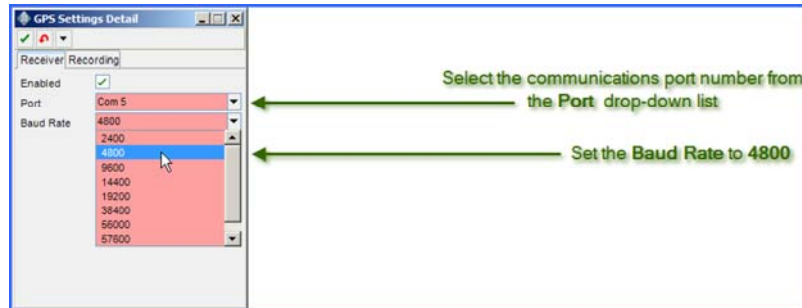


- 2 Tap in your PIN number or password as appropriate.
- 3 Tap OK.  
The **Pocket Manager** security screen will close and the **Pocket Manager Run Pocket RAMM** screen will open.
- 4 Turn on your GPS device.



- 5 Tap the GPS icon.  
The **GPS Settings Detail** screen will open.





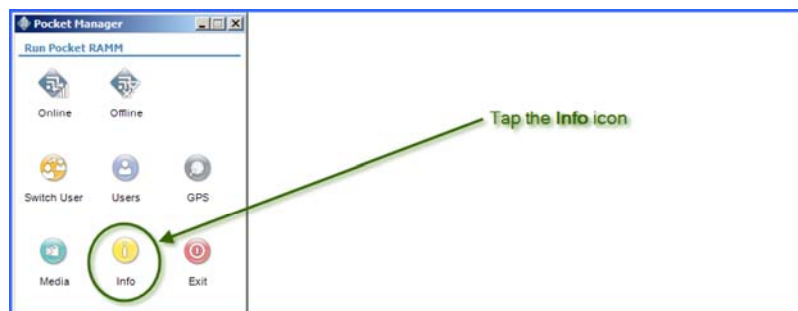
- 6 Select the correct communication port from the Port drop-down list. This will be the COM Port number you remembered or wrote down during the GPS device configuration procedure. In the graphic above this is Com 5.
- 7 Select 4800 from the Baud Rate drop-down list.



You may find that your set up works with a higher Baud Rate selected. However, to be sure that your initial set up functions it is recommended that you select 4800 in the first instance.

When you have confirmed that your initial set up is operating you can then experiment with faster Baud Rates if required.

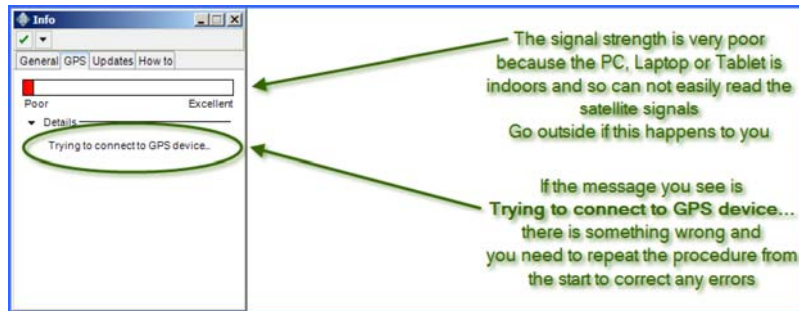
- 8 Press . You will be returned to the **Pocket Manager Run Pocket RAMM** screen.



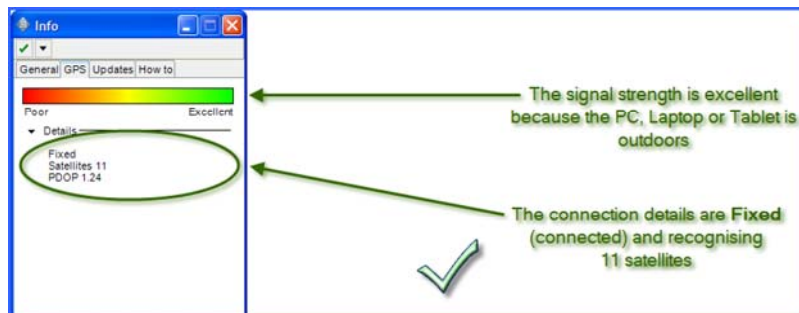
- 9 Tap the Info icon.  
The **Info** screen will open.
- 10 Press the GPS tab.  
The **Info GPS** screen will open.
- 11 Do you see the following message on the screen?

<b>Yes</b>	then go to step 12.
------------	---------------------

**No** then go to step 13.



- 12 If the message on the screen is Trying to connect to a GPS device... then you have made an error as **Pocket Manager** can not detect the GPS device. Go back to the start and repeat the previous procedure and then this one.
- 13 The messages on the GPS tab of the **Info** screen should say that the signal is excellent and that there are a number of satellites in range. The graphic below was taken when the PC, Laptop or Tablet was outside rather than indoors. So the signal strength was excellent and there were eleven satellites in range.



- 14 Press .
- You will be returned to the **Pocket Manager Run Pocket RAMM** screen.
- 15 Exit the software in the normal manner.

# Index

X

XP Vista and Bluetooth • 10

## B

Bluetooth and the PC, Laptop or Tablet • 8

Bluetooth Dongle • 9, 10

## C

Configuring a GPS Device - Microsoft XP or Vista • 10, 18, 23

Configuring a GPS Device - Proprietary Software • 13, 23

Configuring Pocket Manager for a GPS Device • 17, 22, 23

## D

Do You Have Bluetooth Capability? • 8, 9

Document Release • iv

## G

GPS Device • 12

## I

Introduction to Bluetooth GPS Configuration • 7

## P

PC, Laptop and Tablet Configuration • 8, 11