

Q2 2012



excellence in asset management

RAMM LATEST NEWS

IN THIS ISSUE

PAGE 1

RAMM User Group

PAGE 2

RAMM Spotlight

Sign of the Times

Temporary Traffic Management

PAGE 3

Hosting Administration

Temporary Traffic Management Continued

RAMM Tip

Latest RCI Values

PAGE 4

RAMM People - Lauren Henderson

Training Courses

RAMM GIS Layers and Filters



RAMM User Group Conference

The RAMM User Group (RUG) Conference is fast approaching. You are all invited and our friendly staff hope to see all of you there. Almost all of the Support team will be there (they can't all be there - someone has to stay in the office and answer the phones).

Come to the RUG Conference to find out what's new and discover how RAMM has added value to its clients' businesses - and it's added plenty. Become a better RAMM user. Have your say on the future developments. Enjoy plenty of old-fashioned RAMM hospitality.

The RAMM User Group Conference will be held at the Hotel Novotel Auckland Airport (+64 9 257 7200). If you need to book accommodation then quote reference code 63455 for the advantageous Conference rate.

This meeting takes place on 13th September, 2012. We recommend that you book your flights now and beat the price rises.

You pay your own travel and accommodation costs. RAMM Software Ltd will supply the conference venue, lunch and refreshments.

The morning session will look at what's new. RAMM staff will also demonstrate some of the newer applications such as our new geospatial information service, our corridor access request manager and - well, you'll just have to wait and find out.

The second morning session will be Client Case Studies. Actual RAMM users will relate how they have used RAMM in their businesses and the advantages which accrued to them.

In the afternoon we will break into groups to consider developments and enhancements. Now that we use the Agile Development Methodology, our users have effective input into the development process.

Register now at conference@ramm.co.nz while places are still available. We are limited to 130 participants.



RAMM



RAMM Contractor



Works Selection



Hosting Administration



RAMM GIS



CAR Manager



RAMM Patrol



Campbell will be the Master of Ceremonies.



Nigel is keen to see you all again.



This will be Graeme's first RUG Conference



David lives, breathes and talks this stuff.



Richard has set up more users than you could say.



Glen has trained more users than you could imagine.



Charmaine has supported more users than you could poke a stick at.



Ranin won't be there as someone has to answer the phones.

RAMM SPOTLIGHT

WELCOME CAROLYN



Carolyn Adamson is our new RAMM Software Ltd Office Administrator. She is the person to call if you have an account issue. She takes

over an expanded role from Rex Chandler who has moved away from the glorious North Shore of Auckland to be closer to his family.

We are very lucky to have Carolyn and welcome her to the team.

You can contact Carolyn on 09 475 0594 and carolyn.adamson@ramm.co.nz.

WELCOME GRAEME



RAMM Software Ltd is pleased to welcome Graeme Norman to the role of Business Operations Manager. He took on this new role

earlier this year.

Graeme is responsible for all client service delivery. This was previously managed by Grant Kilkolly who left last year. Graeme has also taken over finance and HR.

He is a qualified accountant and has had considerable operational and financial experience in NZ, Australia and the UK.

You can contact Graeme on 09 475 0524 and graeme.norman@ramm.co.nz.

SIGN OF THE TIMES



Warning sign displayed Wednesday Oct 19th 2011 on Ohio State Highway i-70.

TEMPORARY TRAFFIC MANAGEMENT



Temporary Traffic Management (TTM) is the new CAR Manager module.

What Is TTM

You use TTM to capture traffic disruption data and display it on a map. This includes a shape file of the work site, and a series of directional arrows to display any traffic detours. It also captures timing information of when the disruption will occur.

Why Use Temporary Traffic Management

You're probably wondering *why use Temporary Traffic Management?* After all, all the traffic management information is already available from the Traffic Management Plan (TMP). Why enter the TMP information when it is already there?

Well firstly, if it would be useful for your CAR Manager staff to be able to see the traffic disruption details on the map, you would use TTM.

Secondly, it is planned that this traffic disruption information will be captured and displayed in RAMM GIS. Then all your staff with a RAMM login will be able to see the traffic disruption data on the map.

Thirdly, if you have a public-facing web site where you display information to show your citizens what is happening in your city or area, the TMP pdf isn't going to help them much but you can use a combination of the TTM module and a web service to display TTM information on that public web site. You'll need to contact us to talk about the cost to you of creating the web service if you want to go down that track.

But if your citizens could check out and view any likely traffic disruptions in their areas, that would be a pretty useful public service.

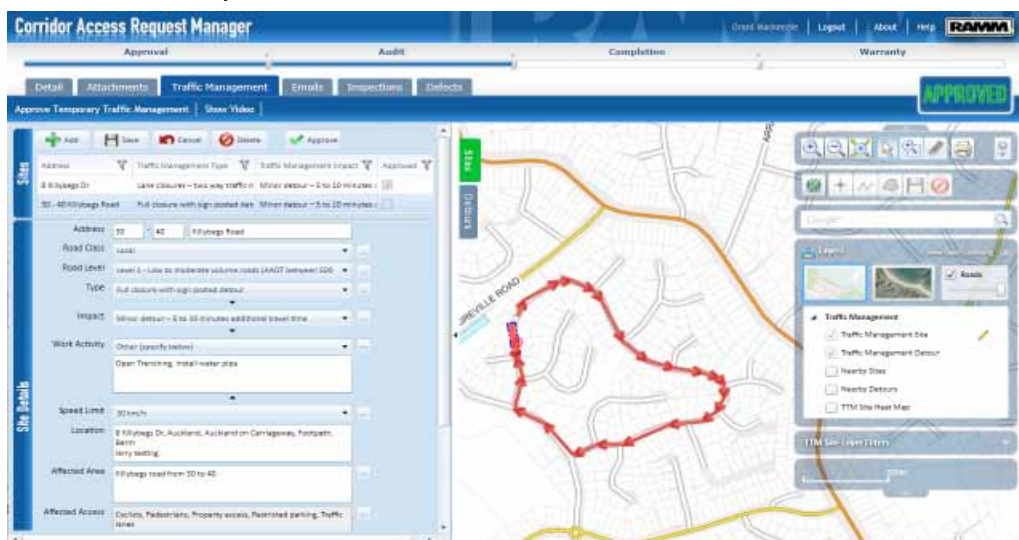
TTM In Action

When TTM has been turned on, it appears as a tab on the CAR Details screen. When you press the tab, a different map opens with no CAR data, just TTM data. This is where you create the graphical representation that you want your staff to see on your internal maps or the public to see on your external-facing web site.

As you draw the affected area on the map the site address automatically defaults if your CAR Manager is linked to your RAMM database. Some of the other details such as road class and road level will default as well.

Traffic Disruption Site Details

You decide the type of traffic disruption and the impact that it will have. You select the descriptions from the drop-down lists or add your own. You set the speed limit for the traffic passing through the area and select the affected area and affected access options that apply. These then default. You can edit them if you want.



HOSTING ADMINISTRATION

Have you tried out Hosting Administration, the new App in RAMM Applications. It is the one where you change your own RAMM password to one that you can remember.



You can modify your own account details. You can view your own RAMM Hosting Service usage.



If you update your details regularly, when Support need to contact you they will have accurate information. And best of all, you can upload a picture of your cat and pretend that it is you (well done Larry).

TEMPORARY TRAFFIC MANAGEMENT Continued

Next you set up the proposed start and end times for the closures. Then you add the detour information.

Traffic Detours

If the traffic must take a detour then you draw it on the map. The tool is really easy to use. It is truly simple to draw a really effective representation of the actual detour. The route is automatically defaulted into the information fields as you draw and you can edit the descriptions for clarity if you want to.

Nearby Sites and Detours

It is probably sensible to check out any Temporary Traffic Management sites or detours in the vicinity of the one you're dealing with. You can control what you see by filtering by the distance from the site or detour, the road classes, the road levels, the type of disruption and its severity of impact.

Only sites and detours within the specified radius which are in either the approval or audit stages display, as these are the only active sites. There is no need to show sites where the traffic disruption is over.

What the Public Will See

So now you can see what your staff will see on your maps and what the public will see on your external facing public map, if you choose the web service option.



You can log in to the CAR Manager and watch the Temporary Traffic Management video for an overview of TTM and to see it in action.

RAMM TIP

WebEx is Dead - Long Live Video

The alert amongst you will have noticed the lack of a WebEx schedule in this issue. The reason for this is quite simple. As more RAMM Training videos become available, the less the need for WebExes. If you have not seen our online videos, go to the RAMM Training page on our web site and press the Training Videos link. Then press the icon for the area in which you are interested.

The first thing you'll notice is that some areas, such as RAMM Patrol have a more or less complete set of setup and how-to-do-it videos whereas other areas, such as Traffic Count Estimation remain in the planning stage (ie there are none to view).

Let us know if there is a video you want to see which has not yet been created. Obviously the list is being updated all the time. Phone Support if you think there is a video which you need and we will assess whether it should have a higher priority and be moved up the production list.



So we say goodbye to the WebExes. They are no more. They have ceased to be. Bereft of life, they rest in peace. They are ExWebExes.

LATEST RCI VALUES

Please find the latest RCI values

30/06/2010	1659
30/09/2010	1659
31/12/2010	1671
31/03/2011	1718
30/06/2011	1742
30/09/2011	1738
31/12/2011	1762

RAMM PEOPLE

LAUREN HENDERSON

Lauren Henderson joined RAMM Software Ltd four years ago (it was CJN Technologies Ltd in those days). She was a most welcome addition to the team as she improved our gender imbalance back then by 100%. She graduated from AUT with a bachelor of Computer and Information Science majoring in Software Development - one of only 5 people that year. She was the only woman to do so.



Lauren is pictured here with her precious daughter Alice.

Last year Lauren went on maternity leave and returned with her beautiful daughter Alice (pictured). During the daytime, Alice stays at the childcare centre next door to the offices. Lauren says "I love being able to pick her up from day care and seeing the huge smile and the excitement on her face when she sees me." Lauren still finds time for playing netball in between feeds.

Lauren works on Pocket RAMM and various other projects. Her favourite quote is "A good friend knows how you make your coffee. A great friend adds booze."

TRAINING COURSES

Training courses are run at the RAMM Software Ltd offices in Auckland. However, they are traditionally not run in the months of June and July which are the busiest in our calendar. This is when our trainers are busy setting up contracts for clients. When the August and September training course schedule is ready it will be available from our web site.

RAMM GIS Layers and Filters

Nearly 300 RAMM users have now logged in to RAMM Applications and tried out RAMM GIS. It just keeps getting better and better. The RAMM GIS team of Stacey, Glenn, Nancy, Pan, Shane and Grant are constantly adding analysis functions, visual improvements and refining the user experience.

Add Your Own Layers

Layers are the key to RAMM GIS. These are the spatial data layers sequentially overlaid on top of the map. This enables you to view and analyse your RAMM data. The standard Layer set is grouped by default into Asset and Network groups. You can now add your own Layers and group them.

You can add Layers from RAMM tables which hold positioned data and for which you have permission to view. You can create Layers from your User Defined Tables (UDTs). You can add Web Service Layers.



Web Service Layers

A Web Service Layer is a set of information Layered over the map that has not come from a RAMM Database table but has been resourced from somewhere on the World Wide Web. If you have a data set available at the end of a URL (uniform resource locator) you can use this to Layer your own non-RAMM data in RAMM GIS or you can Layer publicly available data in RAMM GIS.

Duplicate and Share Layers

You can now copy any Layer, including Public, System, and Private Layers. You can use this to take an existing Layer, and then modify it for your own use. You can share the Layers in a manner similar to the sharing of Filters in RAMM.



Learn from the Layers Video

The Adding RAMM GIS Layers video is available from within the application and from the RAMM Training Video Library. Watch this to learn very quickly how to add your own GIS Layers and to see examples of why you might want to define your own Layers.

Filter by Carriageway Data

Did you know that there is something that is very difficult to do in RAMM but is really easy to do in RAMM GIS? You can Filter on Carriageway table data.

You can, for instance, set a Filter to display only those Street Light Poles which are on carriageways with the two highest ADT values. By the way, if you have any invalid data it really stands out on the map when you create and display your own Layers.

If you have a query or a problem that you would like to talk to us about, feel free to contact us on:
New Zealand **0800 256 832**
Australia **1800 196 213**

For more information or to arrange a demonstration contact:
David Newman
P +64 9 475 0513
E david.newman@dramm.co.nz

RAMM Software Ltd
P O Box 302 278
North Harbour
Auckland
New Zealand

ramm.co.nz