

Q1 2012



excellence in asset management

RAMM LATEST NEWS

IN THIS ISSUE

PAGE 1

RAMM GIS

PAGE 2

RAMM Spotlight

Sign of the Times

RAMM User Group

New RAMM Login

What's New & What's Next in RAMM

PAGE 3

Agile and the RAMM User

Scrums, Chickens and Pigs

RAMM Tip

Latest RCI Values

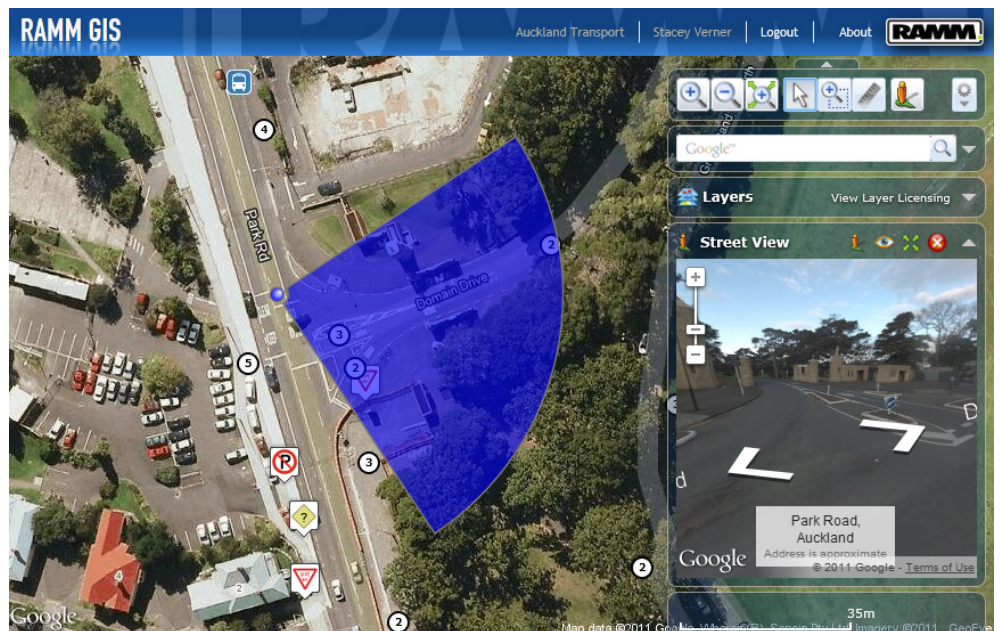
PAGE 4

RAMM People - Larry Chi

Training Courses and WebExes



RAMM GIS



Welcome to our new Geospatial Information System RAMM GIS. Using it is a bit like flying over your network to analyse your RAMM data, but without ever leaving the office.

You might like to think of RAMM GIS as a Google Map (including Street View as shown above) which has been supercharged by having all of your located inventory and condition data layered over it. You can even add layers for your User Defined Table (UDT) data

Personalise RAMM GIS

You personalise RAMM GIS to suit your business purposes by defining the optimum layer set and display parameters. You can even add your own map layers from your web services. Plus you can save your personal settings so it is always set up the way you like it. You can search by road and can save and load placemarks so that you can find and return to your favourite locations quickly.

You can view your RAMM data in the classic RAMM Maps view or the satellite view. The one you use will depend on what you want to see.

Analysis Options

You have a wide variety of analysis options. As well as querying what you are seeing on the

map, you can:

- view dispatches by contract
- analyse FWP including using the Financial Year slider to show Treatments from different years
- view active CARs in RAMM GIS if your organisation uses the CAR (Corridor Access Request) Manager system
- analyse Roughness
- analyse Traffic
- view a selection of summary graphs to see a breakdown of the features in your view for some layers.

The Price

Well, the good news is that if you're already a RAMM Software client, you've already paid for RAMM GIS. We created it for you while we were developing RAMM 2011. It is on the RAMM Hosting Service so usage charges apply.

Login Now

You don't need to have RAMM open to view RAMM data in RAMM GIS. But you do need a RAMM login. You access RAMM GIS in RAMM Applications. So if you haven't logged in to RAMM Applications before, press the Login tab on the RAMM Software Ltd web site and log in using the new link which is pictured over the page. RAMM GIS loads in your internet browser.

RAMM SPOTLIGHT

THE RAMM TRAINING COURSES HAVE BEEN COMPLETELY MODERNISED.



There are now seventeen different RAMM training courses. So every user is catered for whether you are a RAMM Newbie or a RAMM Champion.



Check out the details on the RAMM Software Ltd web site under RAMM Training > Training Courses.

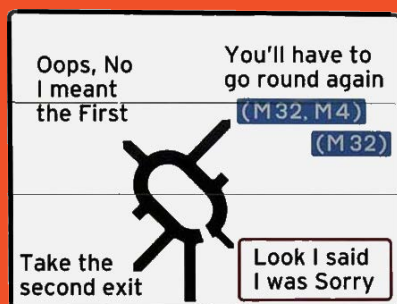


Glen Nalepa (pictured) has overall responsibility for the training courses.



We run these courses in our new training centre at 102 Rosedale Rd, Albany Auckland. You can register for them online. Many of the course information sheets are available online too. The learning suite is fully equipped for your course.

SIGN OF THE TIMES



RAMM USER GROUP

Lock this date and time in your diary - 09:00 am to 04:00 pm Thursday, 13th September, 2012. Book your air travel if necessary. The RAMM User Group is meeting and you are invited. The venue is yet to be decided but it will be close to, or at, the Auckland International Airport. This date is set in stone.

Purpose

In the early days of RAMM, its users all over the country used to organise themselves to meet regularly, often in council offices, to share their RAMM stories. This was an opportunity for users to learn from others in the industry how to optimise their RAMM experience.



A rare photo of an early meeting of the RAMM User Group.

These meetings were run by the users for the users. It has been a while since the last meeting. So RAMM Software Ltd is hosting the next one to start the ball rolling again.

Agenda

The day will be in three parts:

- 1 There will be a series of presentations by RAMM Software Ltd staff demonstrating recent developments and enhancements.
- 2 RAMM users will share their experiences using RAMM. Contact Graeme Norman at graeme.norman@ramm.co.nz if you wish to contribute to this session.
- 3 Then we will breakout into smaller groups to discuss development opportunities in RAMM.

Airfares are cheap and plentiful this far out. So book now to avoid disappointment.

NEW RAMM LOGIN

There is a new way to log in to RAMM. On the Login page of the RAMM Software Ltd web site there are now two options. If you continue to use the standard RAMM login, you can still access your old favourites RAMM Contractor, RAMM Manager et al.

New RAMM Applications

Try the new login to access RAMM Applications. This will give you access, not only to all your traditional RAMM modules but also to the new CAR Manager, Hosting Administration, MetroCount Import, RAMM GIS, RAMM, Graphs, Works Selection and more.

What's New and What's Next

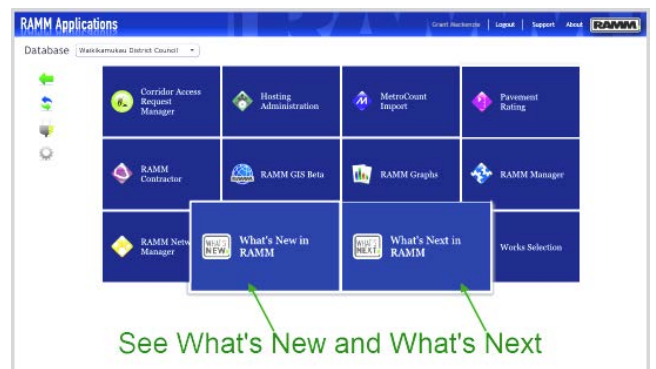
In RAMM Applications you can even read our new Release Notes in the What's New and What's Next options.



What's New and What's Next in RAMM

The delegates at last year's RIMS conference expressed a desire to see release notes detailing the changes which have been made to RAMM with each consecutive release. They also wanted to have knowledge of and input into the changes about to be made to RAMM. So we've done it.

RAMM users can now view What's New and What's Next. These are available in RAMM Applications. So if you are still logging in to RAMM the old way, it is time to change and log in via the RAMM Applications link (see New RAMM Login above). This has been one of the positive outcomes of changing to the Agile software development methodology (see next page).



See What's New and What's Next

AGILE AND THE RAMM USER

How Does it Work?

Agile software development involves iterative and incremental software development. Changes to the software are performed in a fixed time period called a Sprint. At the start of the Sprint the team plans what they will commit to achieve during the Sprint.

The work then commences. The team meets each day in a Scrum (brief daily team meeting). At the end of the Sprint, there is a review meeting to demonstrate the changes made. There is then a Sprint retrospective where the team consider what they did well and how improvements can be made in the next Sprint.

The next Sprint is then planned based on the Product Backlog. This is a list of requirements that have been prioritised and their complexity judged. Team members select jobs as appropriate.



Where Do the Users Fit?

We are currently looking for RAMM users to help with this process. We want users to help us with:

- prioritising change
- reviewing work done
- user stories (telling us what you want the software to do).

If you are interested please contact Nigel Lynton at nigel.lynton@ramm.co.nz. You would not have to be present at our Rosedale Rd offices as you can use Skype or a similar technology.

SCRUMS, CHICKENS AND PIGS

The Agile software development method involves daily meetings called Scrums. Each team member who is allowed to speak at the meeting states, briefly, what they have done, what they are about to do and lists any impediments they face. They are very short meetings as everyone at the meeting is either a chicken or a pig and must remain standing. Only the pigs are allowed to speak.



Why Chickens and Pigs?

The creators of the Agile methodology are believed to have based their farm animal convention on the following, possibly apocryphal, story.

Moonshine-hauling stock car pioneer and NASCAR forefather Junior Johnson was having a breakfast meeting with a stock car industry bigwig. Changes to the safety rules had made Johnson consider withdrawing from racing to prolong his life. The bigwig was positive that Johnson was so committed to racing, he couldn't pull out, whatever the rules. Johnson explained that he (Johnson) had an interest in stock car racing but was not committed to it.



"See this breakfast?" said Johnson (it was bacon and eggs). "The chicken had an interest in this breakfast but the pig was committed. I have only an interest in racing."

So the pigs, who have Sprint commitments may speak. The chickens, who merely have an interest in the Sprint, must remain silent.

This considerably speeds up the meetings.

RAMM TIP

Have you ever wanted to know more about extracting your RAMM data and using it in other applications? Campbell Newman has written RAMM Integration - Functionality, Policy and Pricing.

The document describes the current functionality within RAMM for the extraction, importation and integration of RAMM data with external systems. It also describes the policy for releasing and using this data along with pricing regimes where appropriate.

It will be useful to those who wish to extract data from RAMM or import data into RAMM and want to know what functionality is available and where to access it.



There are a number of broad methods for interacting electronically with RAMM dealt with in the document. These include:

- **GIS Web Features Services**
Extract RAMM data in industry standard GIS format using Web Feature Services.
- **RAMM Data Export Facilities**
Extract data from RAMM for use in products such as Excel.
- **RAMM Data Import Facilities**
Import your data into RAMM.
- **Scheduled Automated Data Export**
SQL statements automatically run to extract data from RAMM for download.
- **RSL Assisted Data Import/Message**
Import data into RAMM where no specific facility exists. For example:
 - attach a large number of photos of your bridge network into RAMM.
- **RAMM Web Services**
Use Web Services to interface with, for instance, your Customer Service Request system.
- **Inter Database Transfer Facilities**
Transfer settings or data between RAMM databases.

LATEST RCI VALUES

Please find the latest RCA values

30/06/2010	1659
30/09/2010	1659
31/12/2010	1671
31/03/2011	1718
30/06/2011	1742
30/09/2011	1738

RAMM PEOPLE - LARRY CHI



Larry here is pictured with the iPad 2 given to him in recognition of his long and dedicated service to RAMM Software Ltd. It sure beats a clock.

Larry is Chinese by birth, but fifteen years ago he became a New Zealander by choice. He has a degree in Medical Engineering from China and a Computer Science degree from Massey University.

He joined RAMM Software Limited as a software developer in early 2001 and has now been a member of the RSL family for 10 years. He is involved in development and maintenance of RAMM software products. In 2009 he took the lead in the design and development of the Corridor Access Request (CAR) Manager which has been such a success for all the RCAs using it.

Larry is the proud father of twin boys and particularly enjoys reading and travelling.

His favourite quote is "The richest man is not he who has the most, but he who needs the least." Anon.

TRAINING COURSES AND WEBEXES

Training Courses

Training courses are run at the RAMM Software Ltd offices in Auckland. Check our web site for pricing and other details.

26th March	RAMM 104 - RAMM Contractor (client focus)
27th March	RAMM 105 - RAMM Contractor (contractor focus)
9th April	RAMM 101 - Fundamentals of RAMM
10th April	RAMM 303 - CAR (1/2 day CAR Manager set up) RAMM 304 - CAR (1/2 day use CAR Manager)
23rd April	RAMM 202 - RAMM Network Manager
24th April	RAMM 204 - Asset Valuation
7th May	RAMM 101 - Fundamentals of RAMM
8th May	RAMM 202 - RAMM Network Manager
21st May	RAMM 104 - RAMM Contractor (client focus)
22nd May	RAMM 105 - RAMM Contractor (contractor focus)



TRAINED

WebExes

28th March	10:00 am Works Selection 03:00 pm Creating Security Zones
4th April	10:00 am What's New - RAMM 2011 Enhancements 03:00 pm RAMM GIS
11th April	10:00 am CAR Manager - set up 03:00 pm CAR Manager - use
18th April	10:00 am Works Selection 03:00 pm RAMM Patrol
25th April	10:00 am Pavement Builder 03:00 pm RAMM Graphs
2nd May	10:00 am User Defined Tables (UDTs) - set up 03:00 pm RAMM GIS
9th May	03:00 pm Filters in RAMM
16th May	10:00 am RAMM GIS 03:00 pm RAMM Patrol
23rd May	10:00 am RAMM Graphs
30th May	10:00 am Works Selection 03:00 pm RAMM Patrol.



DID NOT TRAIN

WebExes Are Free

There is no cost to RAMM users to take part in a WebEx. All you need is a phone and a computer with an internet connection.

Avoid Disappointment

You won't want to find out, just before your first WebEx, that your IT department has configured your firewall to preclude them. Best practice is to contact Support 0800 256 832, and ask them to set up a test WebEx for you so that you can check your connections.

If you have a query or a problem that you would like to talk to us about, feel free to contact us on:
New Zealand 0800 256 832
Australia 1800 196 213

For more information or to arrange a demonstration contact:
David Newman
P +64 9 475 0513
E david.newman@ramm.co.nz

RAMM Software Ltd
P O Box 302 278
North Harbour
Auckland
New Zealand

ramm.co.nz